



FEMA

National Situation Report

As of 3:00 a.m. ET, Tuesday, February 23, 2021

This report is published twice daily, 3:00 a.m. and 5:00 p.m. ET

Common Operating Picture

FEMA HQ		Major Disasters (DR): 115 • COVID-19: 58 Emergency Disasters (EM): 58 • COVID-19: 43 ★ JFOs: 9 / VJFOs: 12 ● Staging Area ■ Declared County (non-COVID-19 Declarations) ■ Fully Activated ■ Partially Activated ■ Monitoring As of 3:00 a.m. ET February 23, 2021 Created by FEMA NWC								N-IMATs 0 Teams Available	
NWC	NRCC									Red	TX
Monitoring	Level I	White	NCR								
FEMA REGIONS		■ 3553-EM-DC FCO: Timothy S. Phiel JFO: TBD ■ 4583-DR-MD FCO: E. Craig Levy, Sr. VJFO: Philadelphia, PA ■ 4540-DR-KY FCO: Kevin A. Wallace VJFO: Frankfort, KY ■ 3552-EM-TN FCO: Myra M. Shird JFO: TBD ■ 4393/4412/4465/ 4543/4568-DR-NC FCO: Myra M. Shird JFO: Raleigh, NC ■ MERS (Greensboro, NC) ■ 3533-EM-FL 4400-DR-GA 4546/4554/4555-DR-AL FCO: Terry L. Quarles 4563/4573-DR-AL FCO: Allan Jarvis 4579-DR-GA FCO: Leda Khoury VJFO: Atlanta, GA ■ 4560-DR-PR FCO: Claude Hyacinthe VJFO: San Juan, PR		R-IMATs 4-6 Teams Available							
WATCH	RRCC			I	Level II	II	USVI				
Monitoring	Level II	III	Level III	III	RRCC						
Monitoring	Level III	IV	Rostered	IV-1	3						
Monitoring	Level IV	V	Level III	V	RRCC						
Monitoring	Level V	VI	Level I	VI-1	NM/OK						
Monitoring	Level VI	VII	Rostered	VI-2	TX						
Monitoring	Level VII	VIII	Level III	VII	2						
Monitoring	Level VIII	IX	Rostered	VIII	1						
Monitoring	Level IX	X	Level III	IX-1	CA						
Monitoring	Level X	X	Level III	IX-2	CA						
Notes:		FMC	PMC	NMC	Deployed						
NRCC / RRCCs: COVID -19 Response	All State EOCs, activated for COVID-19 (except SD)										
RVII RWC: COVID-19 Protocols	PR: Earthquakes LA: TC Laura/Delta/Zeta										
RV RWC: Day shift, Monitoring/ night shift Remote Ops	IA: Derecho CO & CA: Wildfires AK: Flooding & Landslides										
RVI: Winter Weather	WV, KY, MS, OH, OK, , AR, TX, LA: Winter Weather										
Team:	US&R	MERS	FCOs	IM Workforce	Incident Management Cadre Availability Summary						
<i>Status</i>	>66%	>66%	≤1 Type I		<i>Cadres with 25% or Less Availability</i>						
Assigned:	28	36	52	13,852 (-11)	CVR 12% (10/87); DI 23% (15/65); EA 21% (96/458); EHP 17% (114/685);						
Unavailable:	1	0	0	3,023 (+35)	FL 16% (26/165); HM 17% (210/1,243); LOG 9% (125/1,410); NDRS 18% (48/262);						
Deployed:	0	0 (-1)	51 (+1)	7,461 (+94)	OPS 9% (32/339); PA 17% (512/2,970); PLAN 16% (74/459); SAF 11% (7/62);						
Available:	27	36 (+1)	1 (-1)	24% / 3,368 (-140)	SEC 16% (19/118)						

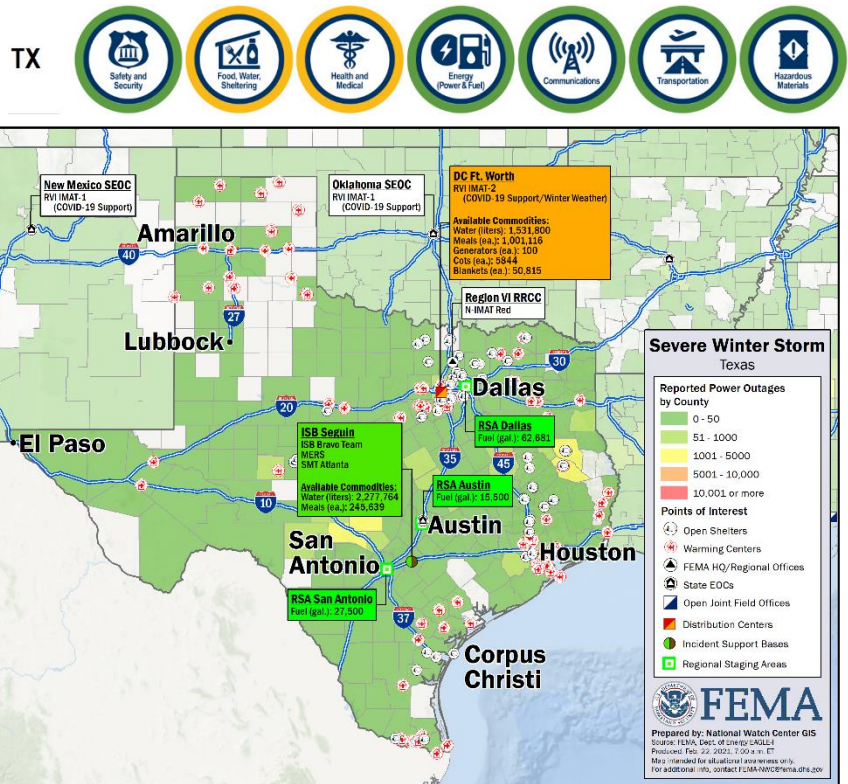
National Current Operations and Monitoring

Winter Weather – Southern Plains

Situation: Sheltering operations continue to decrease, water restoration continues, power and transportation are back to normal. Over 9.8 million people remain under boil water notices. Personnel and resources are staged to support ongoing state request for assistance.

Southern Plains – Major Winter Storm**Lifeline Impacts:***Food, Water, and Shelter:*

- Shelters:
 - TX: 42 congregate shelters with 1,870 occupants; 2 warming shelters open; all shelters except one is expected to close Feb 23 (except homeless shelters) (Region VI SLB Feb 22)
 - TX: Independent (ARC) 2 shelters open with 102 occupants (Red Cross Midnight Shelter Count., 7:01 a.m. ET, Feb 21)
 - OK: Independent 4 open with 44 occupants (Red Cross Midnight Shelter Count., 7:01 a.m. ET, Feb 21)
 - LA: 5 warming shelters remain open to serve homeless population (Region VI SLB Feb 22)
- Food shortages are due to distribution capability, not inventory issues; normal grocery operations are expected in 2 weeks (Region VI SLB, Feb 22)
- FEMA resources and supplies are being delivered by the state to the county level, supporting food banks, fire stations, schools, PODs, and individuals (Region VI SLB, Feb 22)
- LA: 311 (+4) Boil Water Advisories affecting 1.15M (+0.5M) people statewide; 30 systems are non or partially operational, impacting 81k (Region VI SLB Feb 22)
- OK: 227 public water systems and 29 wastewater systems impacted (Region VI SLB Feb 22)
- TX: 1,259 (-78) Boil Water Advisories across the state affecting 8.7M (-5M) people statewide; 137 (-242) water systems are non-operational affecting 123k people; 7 wastewater systems are non-operational (Region VI SLB, Feb 22)
- Over 200 locally managed water distribution sites supported by local, state, federal, private sector and donated resources (Region VI update, 8:36 p.m. ET, Feb 21)

*Health and Medical:*

- Injuries/Fatalities: (Region VI Awareness Report, 5:50 a.m. ET, Feb 20)
 - TX: 107 injuries and 9 fatalities (confirmed)
 - LA: 3 fatalities (confirmed)
- LA & TX: states are experiencing blood supply shortages after weather-related cancellations of many blood drives in the past week
- TX: water has been restored to Houston area hospitals, some of which are seeing an influx of dialysis patients from when their local centers lost water and/or power (HHS ASPR Summary of COVID-19 Service Closures Related to Winter Weather, Feb 22)

Energy:

- Most of the remaining customers without power in LA and TX are due to damaged infrastructure (Region VI SLB Feb 22)
- TX: 8k (-9k) customers (<1%) without power (DOE Eagle-I, 1:30 a.m. ET, Feb 23)
 - 3,919 (-389) (48%) (-4%) out in Gillespie County
 - Minimal outages in Denton County
 - 1,544 (4%) out in Kerr County
- TX: As of 9:30 a.m. ET, Feb 21, ERCOT remains in normal grid conditions, with operating reserve margins within the acceptable range (ESF #12 Situation Report on Extreme Cold & Winter Weather, 11:03 a.m. ET, Feb 22)
- TX: Natural gas producers continue to bring production back online after being shut-in due to wellhead freeze-offs and processing plant outages; as of Feb 22, gas production in the south central region was still down 3 billion cubic feet per day (Bcf/d) or less than 15% from the previous week, but up over 6 Bcf/d from the low on Feb 17; Gas storage draws in

the south central region are back in the normal range (*ESF #12 Situation Report on Extreme Cold & Winter Weather, 11:03 a.m. ET, Feb 22*)

- TX: Some oil refineries that were affected by the cold weather and power outages have begun to restart; as of Feb 22, at least 11 refineries were in full or near-full refinery shutdown, approximately 3.7 million barrels per day (b/d) of capacity, equal to 20% of total U.S. refinery capacity; some refineries may be offline for several weeks; oil producers have begun bringing wells back online (*ESF #12 Situation Report on Extreme Cold & Winter Weather, 11:03 a.m. ET, Feb 22*)

State / Local Response:

- LA EOC at Partial Activation (COVID, TC Laura, Zeta, Delta, winter weather)
- OK EOC at Partial Activation (COVID & winter weather); Governor declared a State of Emergency; [Joint PDAs requested for all 77 counties for Public Assistance](#)
- TX EOC at Partial Activation (COVID & winter weather), working 24/7; Governor declared a State of Emergency

FEMA / Federal Response:

- Major Disaster Declaration FEMA-4586-DR-TX approved Feb 19; [Amendment No. 1 adds 31 counties for Individual Assistance \(already designated for emergency protective measures \[Category B\] under the Public Assistance program](#)
- Emergency Declaration FEMA-3556-EM-LA approved Feb 18
- Emergency Declaration FEMA-3555-EM-OK approved Feb 18
- Emergency Declaration FEMA-3554-EM-TX approved Feb 14
- Region VI RWC/Denton MOC; RRCC at Level I, [24/7 with ESFs 1, 2, 3, 4, 6, 8, 10, 11, 12, 14, 15, CISA, DoD and GSA \(Winter Storms\)](#)
 - IMAT-1 deployed to NM, OK & TX (COVID)
 - IMAT-2 deployed to TX (COVID)
- National IMAT-RED deployed to TX
- USACE Type 3 Power Restoration Team staged in DFW
- MERS deployed to Austin, TX
- FEMA Logistics
 - Logistics Staging Management Team (SMT) and Logistics Incident Support Base (ISB) Bravo Team deployed to ISB Seguin, TX supporting staging commodity mission for TX; [Incident Support Base \(ISB\) Seguin will transition to Federal Staging Area \(FSA\) at 7:00 a.m. ET; will remain at 24/7 operations \(Region VI SLB Feb 22\)](#)
 - FEMA DLA contract support for 70k gallons of diesel fuel (10k per day for 7 days), 70k gasoline for 7 days beginning Feb 20 (*Logistics update, 2:35 p.m. ET, Feb 19*)
 - Meals: 8.4 million ordered, 5.4 million received, 1.6 million shipped to TX; Water: 14 million ordered, 5.9 million received; 5.3 million shipped to TX; Generators: 69 ordered and shipped to TX; Blankets: 126k ordered and shipped to TX; Fuel: 140k ordered, 105k received; 0 shipped to state (*LSCMS Response Dashboard, 1:00a.m. ET, Feb 22*)
- HHS declared a Public Health Emergency for TX due to winter weather (*HHS SOC update, 10:24 a.m. ET, Feb 18*)
- NRCC at Level I (COVID); NWC is monitoring

COVID-19

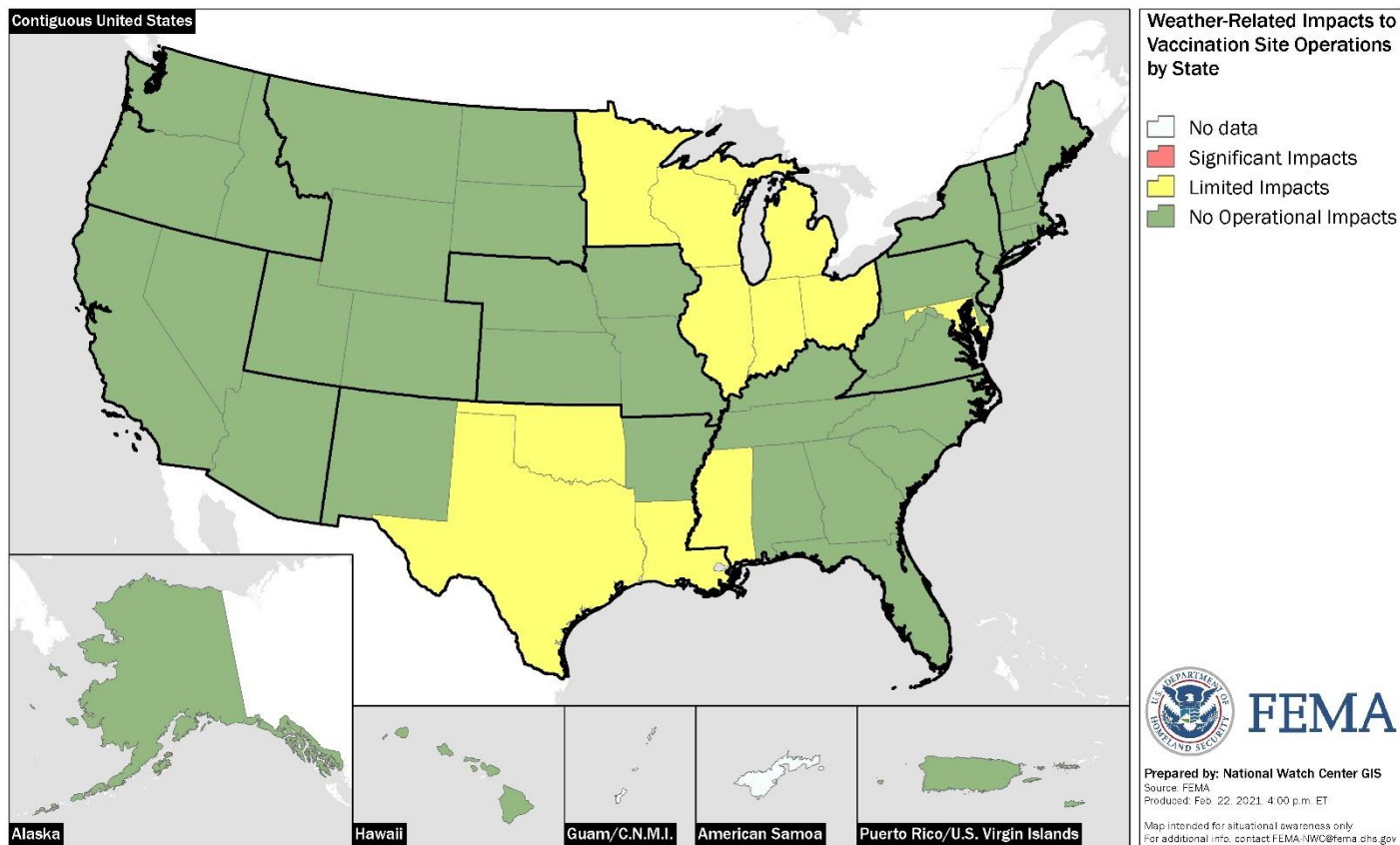
Situation: The National Watch Center, in coordination all ten Regional Watches, is monitoring for potential weather impacts to COVID-19 vaccination sites.

[FedEx is prioritizing shipments of anything COVID-related \(Region VI Watch Awareness Report, 5:51 a.m. ET, Feb 22\)](#)

The Highlighted states have reported COVID-19 Vaccination Site closures due to the winter storms; will reschedule appointments. 2M of the 6M delayed vaccine doses have been delivered (*ASPR COVID Service Summary, Feb 21*)

- Region I:
 - ME: this week's vaccine shipment is delayed due to storms in the south; allotment is expected to ship between Feb 24-26; there is no vaccine for Feb 24-25; appointments for Feb 24-25 have been cancelled and rescheduled (*Region I SpotRep, 5:11 p.m. ET, Feb 22*)
- Region II: Weather-related vaccine delays persist
 - All NJ sites expect deliveries on Feb 24; Elizabeth CVC will close Feb 23-24 due to vaccine delivery days; Somerset CVC closed Feb 22-23 due to Vaccine delivery delays (*NRCC COVID-19 SLB 6:00 p.m. ET, Feb 22*)
- Region III:
 - DE: Dover Downs vaccination site opened Feb 21 and administered over 1,400 doses (*Region III ExecSum, Feb 22*)
- Region IV:

- MS – One site in Washington County was closed Feb 22 (*Region IV DSAR, 2:20 p.m. ET, Feb 22*)
- **Region V:**
 - OH: Private vaccination sites have been canceled in Lawrence and Gallia Counties, OH until further notice, a plan for rescheduling is in progress (*Region V DSAR, 2:00 p.m. ET, Feb 22*)
- **Region VI:**
 - 6 of 23 active sites were closed today due to inclement weather recovery (*Region VI DSAR Feb 22*)
 - TX: 1 CVC in Denton County remains closed until Feb 24 due to weather, reopening to be determined (*NRCC COVID-19 SLB 6:00 p.m. ET, Feb 22*)
 - AR: Testing and vaccine sites are coming back online; working to reschedule missed appointments (*HHS ASPR Summary of COVID-19 Service Closures Related to Winter Weather, Feb 22*)
 - LA: vaccination clinics resumed at LSU Shreveport (*HHS ASPR Summary of COVID-19 Service Closures Related to Winter Weather, Feb 22*)
 - TX: vaccine sites resuming normal operations as the state recovers from weather impacts; testing and vaccination operations have resumed in Austin; 3.3k appointments that were cancelled are being rescheduled with centers extending hours; state will receive almost 1 million doses this week to try to make up for cancelled appointments; vaccine hubs across north TX are re-opening between Feb 21-24, but it will take time to make up for all cancelled appointments over the past week (*HHS ASPR Summary of COVID-19 Service Closures Related to Winter Weather, Feb 22*)
- **Region VII: No anticipated impacts**
- **Region VIII:**
 - CO: Pfizer was to complete backlog by COB Feb 22; Moderna by Feb 24 (*Region VIII DSAR Feb 22*)
 - ND: vaccine shipments were delayed by weather; Pfizer was to complete backlog by Feb 22; Moderna by early to mid-week (*Region VIII DSAR Feb 22*)
 - WY: Moderna delivery from last week delayed and not expected before Feb 24; this impacts over 50% of the state's vaccine supply and has impacted multiple vaccine clinics (*Region VIII DSAR Feb 22*)
- **Region IX: No anticipated impacts**
- **Region X:**
 - 3 CVCs have re-opened after closing over the weekend due to weather-related vaccine delivery delays (*NRCC COVID-19 SLB 6:00 p.m. ET, Feb 22*)



Weather Threats

- Colder than average temperatures will spread southeast from the Northern Rockies region today into the Central Rockies and Central High Plains by Wednesday. High winds are likely across the Northwest and Northern High Plains with gusts up to 75 mph possible. High Wind Warnings and Wind Advisories are in effect across much of Montana, portions of Wyoming and into western to central portions of North and South Dakota.

(NOAA Forecasts: [NWS](#) / [WPC](#) / [SPC](#))

Joint Preliminary Damage Assessments

Region	State	Event / Date	Type	Counties		Start – End Dates
				Requested	Completed	
		<i>No Joint PDAs Currently Ongoing</i>	IA	N/A	N/A	N/A
			PA	N/A	N/A	N/A

Declaration Activity

Declaration Requests in Process: 5 (NC, AL, VA (Appeal), MD (Appeal), & ID)

(Declared Disasters: [fema.gov](#))

Joint Field Office Status Updates

Amendment No. 1 to FEMA-4586-DR-TX

- Issued February 22, 2021
- Adds 31 counties for Individual Assistance (already designated for emergency protective measures [Category B] under the Public Assistance program)

(JFO listing available on [NWC SharePoint Site](#))

Regional Current Operations & Monitoring

<i>Region I</i>	<i>Region VI</i>
<p>RRCC: Level II (day shift – COVID-19) WATCH – Maynard MOC: Monitoring (24/7) IMAT: FMC / Available LNOs: CT, MA, ME, NH, RI, VT, & 1 Tribe EOCs:</p> <ul style="list-style-type: none"> CT, ME, & NH: Full Activation (COVID-19) MA, RI, & VT: Partial Activation (COVID-19) <p>Regional Continuity Status: Not activated</p>	<p>RRCC: Level I, 24/7 (some virtual operations – Winter Storm) WATCH – Denton MOC: Monitoring (24/7)</p> <ul style="list-style-type: none"> Winter storm recovery (see above) <p>IMAT-1: Deployed / NM/OK/TX (COVID-19 Vaccine Response) IMAT-2: Deployed / TX (COVID-19 Vaccine Response) LNOs: NM, TX, OK, AR, & LA EOCs:</p> <ul style="list-style-type: none"> LA: Partial Activation (TC Laura, Delta, Zeta, Winter Weather & COVID-19) AR, NM: Partial Activation (COVID-19) TX: Partial Activation (Winter weather & COVID-19) OK: Monitoring (COVID-19) <p>Regional Continuity Status: Partially Activated (Telework/COVID-19)</p>
<i>Region II</i>	<i>Region VII</i>
<p>RRCC: Level III (Winter Weather – COVID-19); WATCH: Monitoring (24/7) IMAT: Deployed / USVI (COVID-19 Vaccine Response) EOCs:</p> <ul style="list-style-type: none"> PR: Partial Activation (Earthquake & COVID-19) NY, NJ, & USVI: Partial Activation (COVID-19) <p>Regional Continuity Status: Partially Activated (Telework/COVID-19)</p>	<p>WATCH: Monitoring (24/7); Alt Location IMAT: FMC / Available LNOs: NE, KS, IA, & MO EOCs:</p> <ul style="list-style-type: none"> NE & KS: Full Activation (COVID-19) IA: Partial Activation (Derecho & COVID-19) MO: Partial Activation (COVID-19) <p>Regional Continuity Status: Partially Activated (Telework/COVID-19)</p>
<i>Region III</i>	<i>Region VIII</i>
<p>RRCC: Level I (day shift only - COVID-19) WATCH: Monitoring (24/7) IMAT: Deployed / RRCC (COVID-19) EOCs:</p> <ul style="list-style-type: none"> PA: Full Activation (COVID-19) WV: Full Activation (Winter weather & COVID-19) DC & VA: Partial Activation (COVID-19) DE, & MD: Monitoring (COVID-19) <p>Regional Continuity Status: Not Activated</p>	<p>RRCC: Level III (day shift only – COVID-19) WATCH – Denver MOC: Monitoring (24/7)</p> <ul style="list-style-type: none"> Blizzard Warning for MT; additional snow accumulations of 3-6 inches, higher elevations 8-16 inches, wind gusts to 75 mph possible <p>IMAT: FMC / Available EOCs:</p> <ul style="list-style-type: none"> CO: Full Activation (Wildfires & COVID-19) UT: Full Activation (COVID-19) MT & WY: Partial Activation (COVID-19) ND: Monitoring (COVID-19) <p>Regional Continuity Status: Not Activated</p>
<i>Region IV</i>	<i>Region IX</i>
<p>RRCC: Level III (COVID-19) WATCH: Monitoring (24/7)</p> <ul style="list-style-type: none"> Moderate to isolated major river flooding across portions of NC, SC, GA, & FL <p>IMAT-1: FMC / Available IMAT-2: FMC / Available EOCs:</p> <ul style="list-style-type: none"> FL: Full Activation (COVID-19) AL, GA, TN, NC & SC: Partial Activation (COVID-19) MS & KY: Partial Activation (Winter weather & COVID-19) <p>Regional Continuity Status: Not Activated</p>	<p>WATCH: Monitoring (24/7)</p> <ul style="list-style-type: none"> Flash Flood Watch & High Wind Warning for all islands of AS <p>IMAT-1: FMC IMAT-2: Deployed / CA (Wildfires) IMAT-A: AZ, CA, HI, NV, AS, CNMI, GU, & Navajo Nation EOCs:</p> <ul style="list-style-type: none"> CA: Full Activation (Wildfires & COVID-19) AZ, NV, & GU: Full Activation (COVID-19) HI, AS, & CNMI: Partial Activation (COVID-19) <p>Regional Continuity Status: Partially Activated (Telework/COVID-19)</p>
<i>Region V</i>	<i>Region X</i>
<p>RRCC: Level III (day shift – COVID-19) WATCH: Monitoring (24/7); Alt Location (night shift) IMAT: Deployed / RRCC (COVID-19 Vaccine Response) LNOs: IL, IN, MI, MN, OH, & WI EOCs:</p> <ul style="list-style-type: none"> IL, MN, & WI: Full Activation (COVID-19) OH: Partial Activation (Winter weather & COVID-19) IN & MI: Partial Activation (COVID-19) <p>Regional Continuity Status: Not Activated</p>	<p>RRCC: Level III (day shift – COVID-19) WATCH – Bothell MOC: Monitoring (24/7)</p> <ul style="list-style-type: none"> Avalanche Warning for WA; heavy snow expected which could increase avalanche risk, major passes/highways in the area will remain closed <p>IMAT: Deployed / RRCC (COVID-19) EOCs:</p> <ul style="list-style-type: none"> OR & WA: Full Activation (COVID-19) ID: Partial Activation (COVID-19) AK: Monitoring (COVID-19) <p>Regional Continuity Status: Partially Activated (Telework/COVID-19)</p>

FEMA National Situation Report Acronyms & Abbreviations**Front Page – Common Operating Picture**

NWC:	National Watch Center	ISB:	Incident Support Base	R-IMAT:	Regional Incident Management Assistance Team
NRCC:	National Response Coordination Center	MERS:	Mobile Emergency Response Support	RRCC:	Regional Response Coordination Center
EX (State):	Exercise (Location)	N-IMAT:	National Incident Management Assistance Team	RWC:	Regional Watch Center
FCO:	Federal Coordinating Officer	NMC:	Non-Mission Capable	US&R:	Urban Search & Rescue
FDRS:	Federal Disaster Recovery Coordinator	PMC:	Partially Mission Capable		
FMC:	Fully Mission Capable				
IM:	Incident Management				

Front Page – Force Laydown Map

CAD:	Caribbean Area Division	DR:	Major Disaster Declaration (Stafford Act)	IST:	Incident Support Team
CNMI:	Commonwealth of the Northern Marianas Islands	EM:	Emergency Declaration (Stafford Act)	JFO:	Joint Field Office
DC:	Distribution Center / District of Columbia	EOC:	Emergency Operations Center	LNO:	Liaison Officer
		FCO:	Federal Coordinating Officer	TF:	Task Force
				VJFO:	Virtual JFO

Front Page – Incident Management Cadres

ACQ:	Acquisitions	DSA:	Disaster Survivor Assistance	HR:	Human Resources
ADR:	Alternative Dispute Resolution	EHP:	Environmental Planning and Historic Preservation	IA:	Individual Assistance
DI:	Disability Integration	ER:	Equal Rights	IT:	Information Technology
DEC:	Disaster Emergency Communications	EA:	External Affairs	OCC:	Office of Chief Counsel
DFTO:	Disaster Field Training Ops	FL:	Field Leadership	LOG:	Logistics
		FM:	Financial Management	HM:	Hazard Mitigation

Other Acronyms & Abbreviations

ARC:	American Red Cross	IST:	Incident Support Team
CBRN:	Chemical, Biological, Radiological and Nuclear	JTWC:	Joint Typhoon Warning Center
CDC:	Centers for Disease Control and Prevention	MCOV:	Mobile Communications Operations Vehicle
CIKR:	Critical Infrastructure / Key Resources	MEOV:	Mobile Emergency Operation Vehicle (MERS)
DCO:	Defense Coordinating Officer	MCC:	Movement Coordination Center
DFA:	Direct Federal Assistance (Stafford Act program)	MMI:	Modified Mercalli Intensity (Earthquake scale)
DIRS:	Disaster Information Reporting System	MOC:	MERS Operations Center
DLA:	Defense Logistics Agency	NHC:	National Hurricane Center
DoD:	Department of Defense	NG:	National Guard
DOE:	Department of Energy	NOAA:	National Oceanic & Atmospheric Administration
DRC:	Disaster Recovery Center	NWS:	National Weather Service
EAGLE-I:	Environment for Analysis of Geo-Located Energy Information (DOE)	PA:	Public Assistance (Stafford Act program)
EF:	Enhanced Fujita (Tornado scale)	PAGER:	Prompt Assessment of Global Earthquakes for Response
EPA:	Environmental Protection Agency	PDA:	Preliminary Damage Assessment (Joint FEMA/State)
ESF:	Emergency Support Function	PSPS:	Public Safety Power Shutoff
FMAG:	Fire Management Assistance Grant	RATs:	Repeater and trailer
GIS:	Geospatial Information Systems	ROC:	Response Operations Cell (part of the NRCC)
GOATs:	Generator on a trailer	SEAR:	Special Event Assessment Rating
HHS:	Health & Human Services	SLTT:	State, Local, Tribal, and Territorial (<i>Governments</i>)
HM:	Hazard Mitigation (Stafford Act program)	SMT:	Staging Management Team
IA:	Individual Assistance (Stafford Act program)	USACE:	U.S. Army Corps of Engineers
IMAAC:	Interagency Modeling & Atmospheric Assessment Center	USAID:	U.S. Agency for International Development
IOF:	Initial Operating Facility	USCG:	U.S. Coast Guard
IPAWS:	Integrated Public Alert & Warning System	USGS:	U.S. Geological Survey

(More FEMA Acronyms: [FAAT Book](#))